

SUMMARY

Wires

Low	6
High	0
Coax	0
Triax	0
Quad	0
Fiber	0
Fluidic	0

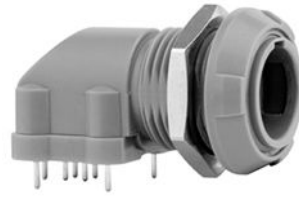


Image is for illustrative purpose only

Download

[Request a quote](#)

[Catalog](#)

Series	P
Termination type	Female print PCB
IP rating	50
Cable Ø	0.00 - 0.00 mm
Matching parts	PAG.M0.6GL.AC39G
Status	
Alternative part	

TECHNICAL DETAILS

Mechanics

Shell Style/Model	PX*: Elbow receptacle key (G) or keys (A,B,C) with two nuts for printed circuit
Keying	1 key (alpha=0; Plug: male contact; Receptacle: female contact)
Housing Material	PSU (Polysulfone), gray
Cable Fixing	∅ 0 - 0 mm
Variant	A : Blue front nut

Performance

Configuration	1P.M06 : 6 Low Voltage
Insulator	
Rated Current	6 Amps

Specifications

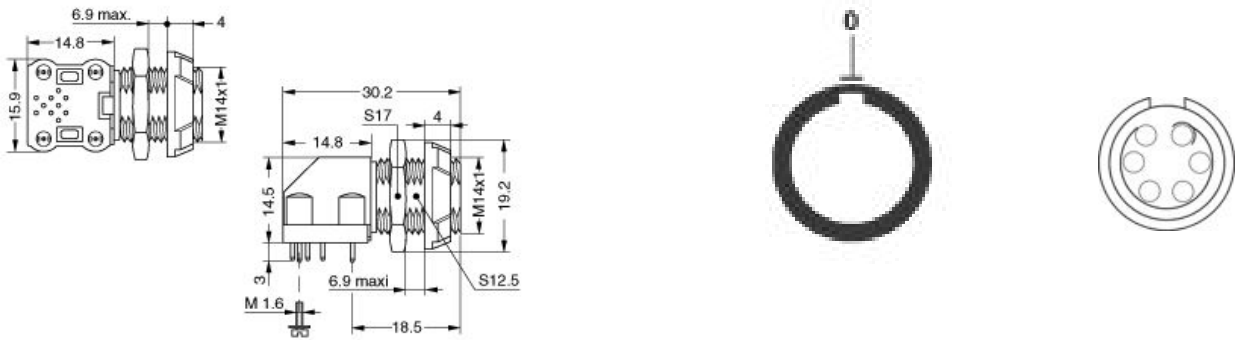
Contact Type: Print (straight)
Max. Matings: 2000
Contact Dia.: 0.7 mm (0.0275in)
R (max): 6.5 mOhm
Test voltage (kV rms) Contact-contact: 1.05
Air clearance min. (mm) or Creepage distance min. (mm): 0.85

Others

F ret (min): 50 N
F ret (max): 150 N
IP Rating: 50

DRAWINGS

Draws



Dimensions

	A	E	L	S1	S2	e
mm.	19.2	6.9 max	30.2	S12.5	S17	M14x1
in.	0,76	0,27	1,19			

RECOMMENDED BY LEMO

Tools

None

Cables